



INDOFINE Chemical Company, Inc.

121 Stryker Lane, Bldg. 30, Suite 1 • Hillsborough, NJ 08844 • U.S.A.

Phone: (908) 359-6778 • FAX: (908) 359-1179

website: www.indofinechemical.com

e-mail: chemical@indofinechemical.com

CERTIFICATE OF ANALYSIS

Catalog Number: 06-312

Product Name: **beta-EUDES MOL**

CAS Number: [473-15-4]

Lot Number: 2111603

Chemical Formula: C₁₅H₂₆O

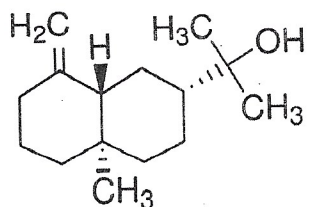
Molecular Weight: 222.37

Appearance: Off-white powder

Loss on Drying: 1.2%

Storage: Store in a cool, dry place. Protect from light.

Purity(HPLC): 93.51%



Prepared by:
Ramesh Mandadi
Ramesh Mandadi
Director of Operations

Reviewed and Approved by:
Sujata Moton
Sujata Moton
VP



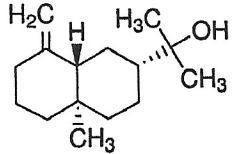
INDOFINE Chemical Company, Inc.

121 Stryker Lane, Bldg. 30, Suite 1 • Hillsborough, NJ 08844 • U.S.A.

Phone: (908) 359-6778 • FAX: (908) 359-1179

website: www.indofinechemical.com

e-mail: chemical@indofinechemical.com



HPLC ANALYSIS

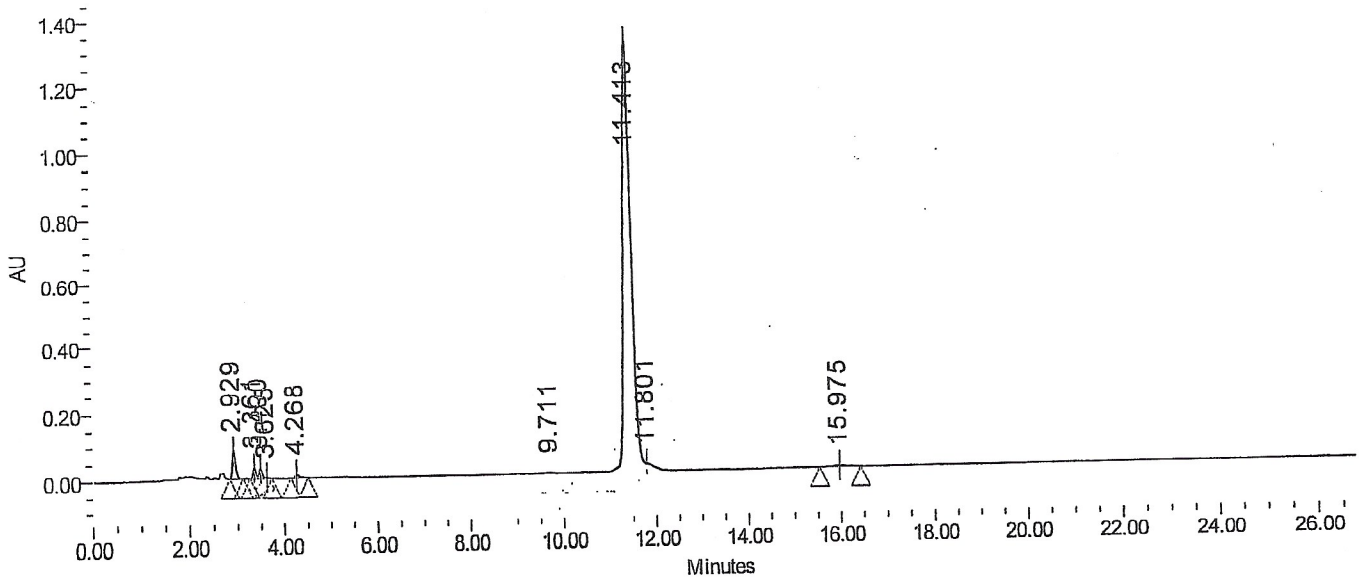
Catalog No.: 06-312
 Product Name: beta-Eudesmol
 Lot No.: 2111603

SAMPLE INFORMATION

Sample Name: Beta-Eudesmol
 Sample Type: Unknown
 Vial: 94
 Injection #: 1
 Injection Volume: 10.00 ul
 Run Time: 30.0 Minutes

Acquired By: prf01
 Sample Set Name
 Acq. Method Set: Beta-Eudesmol
 Processing Method: sample
 Channel Name: PDA Ch1 205nm@4.8nm
 Proc. Chnl. Descr.: PDA Ch1 205nm@4.8nm

Auto-Scaled Chromatogram



Peak Results

	Name	RT	Area	% Area	Height (µV)	USP Plate Count	USP Resolution
1		2.929	397388	2.31	84181		
2		3.361	136144	0.79	32066		
3		3.490	141967	0.83	31013		
4		3.625	12996	0.08	3071		
5		4.268	68186	0.40	11683		
6		9.711	14650	0.09	1599		
7		11.413	16067913	93.51	1323574		
8		11.801	249801	1.45	21852		
9		15.975	93821	0.55	3859		